



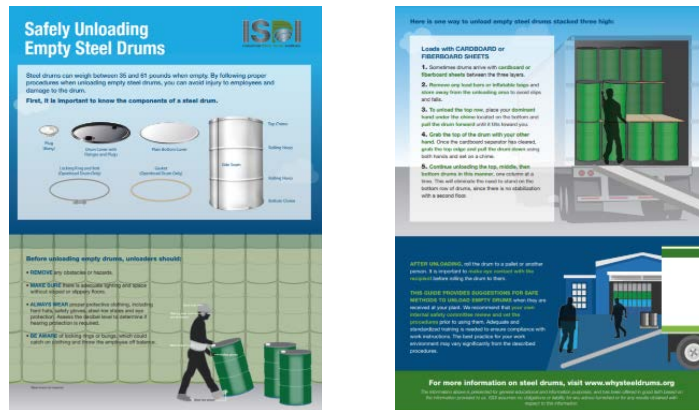
Press Contact
 Susan R. Nauman
 Tel: 410.544.0385
snauman@industrialpackaging.org
<http://www.whysteeldrums.org>

FOR IMMEDIATE RELEASE

ISDI Publishes New Resource on Steel Drum Safety

SEVERNA PARK, Md. (July 17, 2018) – Today, the Industrial Steel Drum Institute (ISDI) unveiled a new infographic that describes how to safely unload steel drums. The single-page illustration details the components of a steel drum and provides suggestions for safe methods of unloading and moving empty steel drums.

“Steel drums are one of the most widely used types of industrial packaging for hazardous goods due to their strength, durability and unparalleled safety record,” said Kyle Stavig, chairman of ISDI and CEO of Myers Container LLC and General Steel Drum LLC. “This fact sheet is a valuable tool that professionals can use to enhance safety awareness and techniques when working with them.”



Globally, over 200 million steel drums are produced and used every year. They can weigh between 35 and 61 pounds when empty, and therefore they can be difficult to move if not done properly. Proper handling can reduce the possibility of employee injuries, in addition to minimizing damage to a drum.

The file is available for sharing and printing for all those interested in steel drums. [Click here](#) to download a copy.

About the Industrial Steel Drum Institute (ISDI)

ISDI, formerly known as the Steel Shipping Container Institute, represents the industry before federal agencies and the U.S. Congress, acts as liaison with other industry groups and individual corporations, and plays an active role with international organizations, including the U.N. Committee of Experts on the Transport of Dangerous Goods. ISDI's mission is to promote the common interests of its members through government relations, technical research, education and information exchange, media relations, and generic marketing programs. For more information, visit <http://www.whysteeldrums.org>.